

Dynamic Load Sensors on Race Cars

KA Sensors Ltd offer a service to race teams and race car manufacturers for the design and supply of dynamic load sensors.

We will either incorporate a load cell into an existing component or build a load cell to suit a particular installation.

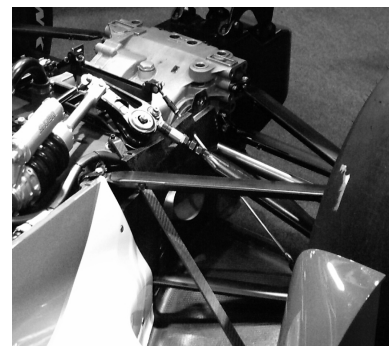
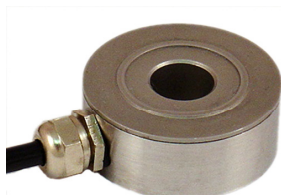
With over 30 years of sensor design experience, we are able to offer load sensing solutions for almost any application.

By using leading edge strain gauge techniques and smart amplifier we are able to measure, amplify and correct for temperature errors in one compact assembly.

Every sensor is tested and issued with traceable calibration certificate before shipping.

Some typical installations include:

- ✓ *Pushrod / pullrod load cells on suspension*
- ✓ *Wishbone strain gauging*
- ✓ *Steering rod load*
- ✓ *Steering column load and torque*
- ✓ *Damper load (1,2,3 axis)*
- ✓ *Anti roll bar loading*
- ✓ *Engine /gearbox mounting*
- ✓ *Aero load on wing or bodywork*



Typical specifications:

<i>Force range:</i>	<i>100 to 30,000N</i>
<i>Supply:</i>	<i>8-16V</i>
<i>Output:</i>	<i>0.5 to 4.5V ($\pm 2V$)</i>
<i>Accuracy:</i>	<i><0.5% FS combined linearity & hysteresis</i>
<i>Operating temperature:</i>	<i>-20 °C to +120 °C</i>
<i>Compensated temperature:</i>	<i>0 °C to +70 °C (option of full operating temp range)</i>
<i>Zero shift within CTR:</i>	<i><0.02% FS/°C</i>
<i>Span shift within CTR:</i>	<i><0.02% of reading/°C</i>

KA Sensors Ltd. PO Box 8826. Grantham. Lincolnshire. NG31 0AR. [UK](http://www.kasensors.co.uk)

t/f: +44 (0)1476 561495

m: +44 (0)7976 959621

e: sales@kasensors.co.uk

w: www.kasensors.co.uk